



Energy  
Technologies  
Area  
BERKELEY LAB



**MARY ANN PIETTE,**  
*Associate Laboratory Director*

**SCIENCE**

BUILDING & INDUSTRIAL ENERGY SYSTEMS DIVISION



**Jessica Granderson**  
*Division Director*



**Tianzhen Hong,**  
*Research Deputy*



**Erin Harbin,**  
*Business Manager*

ENERGY ANALYSIS DIVISION



**Tom Kirchstetter**  
*Division Director*



**Corinne Scown,**  
*Research Deputy*



**Peter Larsen,**  
*Research Deputy*



**Colleen Kantner,**  
*Operations Deputy*

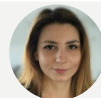
ENERGY TECHNOLOGIES & SYSTEMS DIVISION



**Robert Kostecki**  
*Division Director*



**Shannon Boettcher,**  
*Research Deputy*



**Vassilia Zorba,**  
*Operations Deputy*

**OPERATIONS**



**Jerri Carmo**  
*Area Deputy*



**PROGRAM &  
BUSINESS  
DEVELOPMENT**  
Alecia Ward